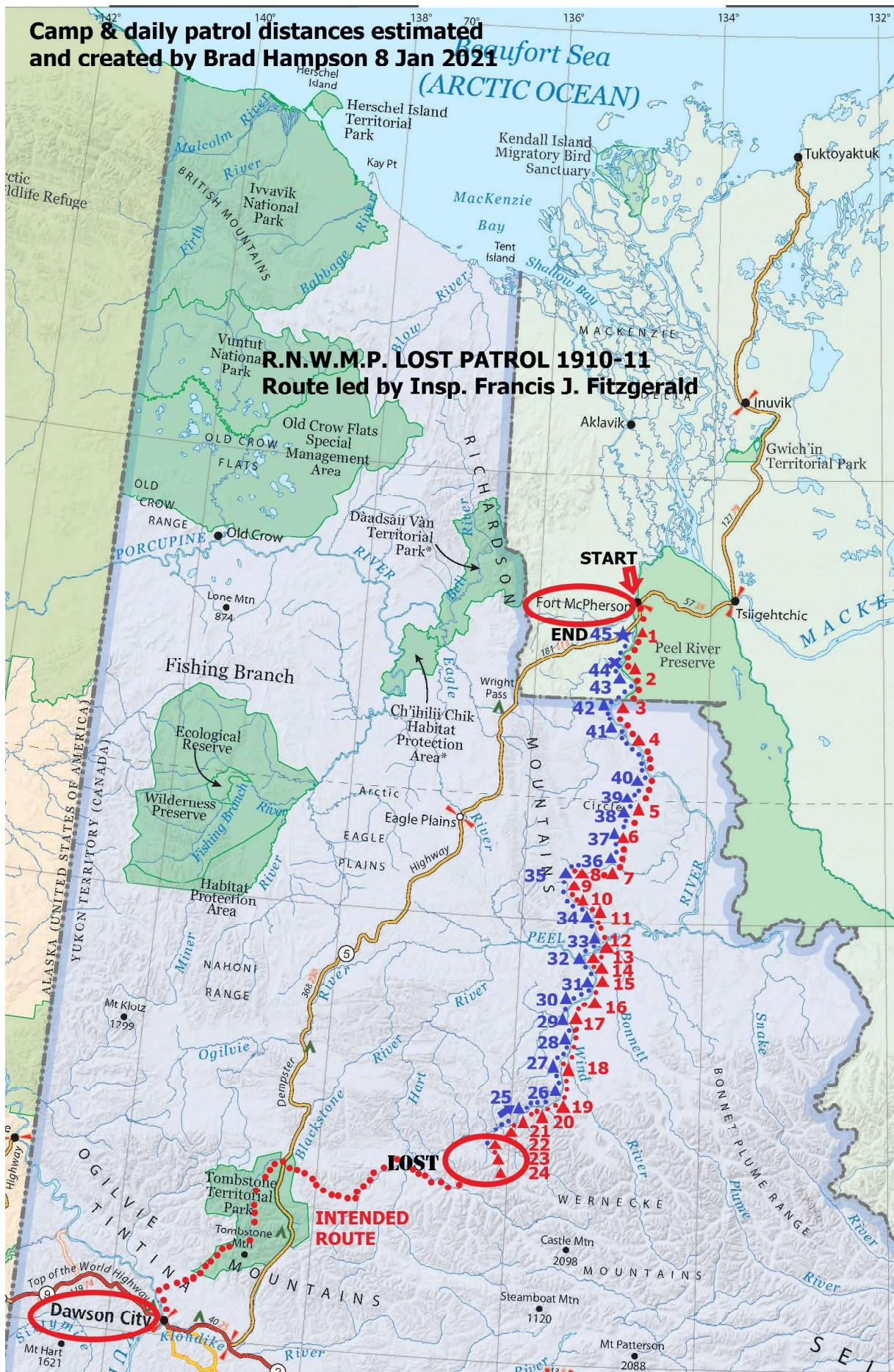


**Camp & daily patrol distances estimated
and created by Brad Hampson 8 Jan 2021**



RNWMP LOST PATROL MAP LEGEND 1910-1911

[Compiled from entries in Fitzgerald's diary]

Outgoing camps and intended route in RED (distance Fort McPherson to Dawson City 765 kms)

Returning camps in BLUE (Full distance Patrol covered close approx. 1,000 kms)

Numbers correspond to campsite/diary entries in the accompanying Legend.

LÉGENDE DE LA CARTE DE LA PATROUILLE PERDUE DE LA RGCN-O 1910-1911

[Compilée à partir du journal de Fitzgerald]

Camps de départ et itinéraire prévu en ROUGE (distance de Fort McPherson à Dawson City 765 km)

Camps de retour en BLEU (La patrouille a parcourue une distance totale de près de 1 000 km)

Les numéros correspondent à ceux qui figurent sur la carte ci-jointe à titre de référence.



RNWMP LOST PATROL MAP LEGEND 1910-1911 [Compiled from entries in Fitzgerald's diary]

- Numbers correspond to campsite/diary entries in the accompanying Map of the Lost Patrol.
- 1. 21 Dec 1910 - No Sun above horizon, only twilight, 24 kms, -30 C, hard going, camped Indian cabin;
- 2. 22 Dec 1910 – No Sun, 29 kms, -27 C, fair going;
- 3. 23 Dec 1910 – No Sun, 27 kms, -22 C, heavy snow overnight caused heavy going;
- 4. 24 Dec 1910 - Sunlight Afternoon for 12 mins, 26 kms, -27 C, strong wind, heavy snow, heavy going;
- 5. 25 Dec 1910 - Christmas, 26 kms, -34 C, heavy going on Peel River but good on Trail River to camp;
- 6. 26 Dec 1910 – Boxing Day, 29 kms, -31 C, strong wind, going very good;
- 7. 27 Dec 1910 – 19 kms, -39 C, Strong wind, bad going, deep snow, climbed 800 ft, hired Indian guide;
- 8. 28 Dec 1910 – 19 kms, -42 C, climbed 1,000 ft very steep, very deep snow, very cold;
- 9. 29 Dec 1910 – 23 kms, -37 C, cold, snow very deep, sled dogs tired;
- 10. 30 Dec 1910 – 14 kms, -46 C, very deep snow and steep climb, slow going and cold;
- 11. 31 Dec 1910 - Sunlight Afternoon for over 1 hour, 26 kms, -40 C, strong wind, very heavy going;
- 12. 1 Jan 1911 – New Year's Day, 18 kms, -38 C, Heavy snowstorm, Heavy going, paid off Indian guide;
- 13. 2 Jan 1911 – 16 kms, -37 C, heavy snowstorm night & day, bush-cutting, Going very heavy;
- 14. 3 Jan 1911 – 19 kms, -43 C, light snowfall, going very heavy, sled dogs almost played out;
- 15. 4 Jan 1911 – 16 kms, -44 C, snowing, 3 feet of snow, Going very heavy;
- 16. 5 Jan 1911 – 9 kms, -55 C, camped early due to intense cold, frostbite suffered, going heavy but better;
- 17. 6 Jan 1911 – 18 kms, -48 C, very strong wind, lots of trouble open water, very heavy going;
- 18. 7 Jan 1911 – 21 kms, -46 C, lots of open water forced off river, going fairly good;
- 19. 8 Jan 1911 – 14 kms, -53 C, strong headwind, going very heavy and slow due to intense cold;
- 20. 9 Jan 1911 – 26 kms, -30 C, fine clear day, fair going, but a little heavy in pm;
- 21. 10 Jan 1911 – Sunlight Afternoon for 3 hours, 24 kms, -25 C, strong headwind, dogs had problems ice;
- 22. 11 Jan 1911 – 14 kms, -30 C, Strong headwind, River overflow caused all to have wet feet, unpleasant;
- 23. 12 Jan 1911 – 19 kms, -38 C, Carter sent ahead to find portage, unsuccessful, too far up;
- 24. 13 Jan 1911 – 24 kms, -24 C, snowing, Carter up wrong creek, Carter sent looking again, (Read diary);
- 25. 14-17 Jan 1911 – Bad weather, 45 kms searching for Forrest Creek – Low food – LOST Decide Return;
- 26. 18-20 Jan 1911 – 3 days gale winds, 66 kms, 2 camps, killed 1st 2 dogs for food, existing food rationing;
- 27. 21 Jan 1911 – 32 kms, -18 C, feet got wet yesterday, 3rd dog killed for food, slow going;
- 28. 22-23 Jan 1911 – 1 camp due to intense cold, -53 C, 27 kms, bad going water, Carter's fingers frozen;
- 29. 24 Jan 1911 – 9 kms, -48 C, open water, Taylor & Carter wet to waist, killed and ate 4th dog, very cold;
- 30. 25 Jan 1911 – 29 kms, -49 C, open water issues, killed 5th dog, only dog meat and tea now;
- 31. 26 Jan 1911 – 13 kms, -25 C, heavy going deep snow, open water, dogs and men getting weak;
- 32. 27 Jan 1911 – 17 kms, -29 C, Snowstorm, heavy going, killed 5th dog (9 left), food cache found empty;
- 33. 28 Jan 1911 – 19 kms, -43 C, Strong winds heavy going, Taylor sick last night;
- 34. 29 Jan 1911 – 16 kms, -29 C, Snowing, killed 6th dog, Dogs & Men weak, Cached 1 sled & harnesses;
- 35. 30 Jan 1911 – 22 kms, -46 C, Going very heavy, old trail filled in, all sick maybe from eating dog livers;
- 36. 31 Jan 1911 – 27 kms, -52 C in pm, Skin peeling faces body parts on all, lips swollen split, feeling cold;



RNWMP LOST PATROL MAP LEGEND 1910-1911 [Compiled from entries in Fitzgerald's diary] Continued

- Numbers below correspond to those on the attached map for reference purposes

37. 1 Feb 1911 – 26 kms, -51 C, heavy going, trail filled in, killed 7th dog not many left, dogs eating fish;
38. 2 Feb 1911 – 16 kms, -14 to -30 C through day, camped on mountain got astray in mist, hard in creek;
39. 3 Feb 1911 – 23 kms, -32 C, killed 8th dog, men and dogs all thin & weak, can't go far, 160 kms to go;
40. 4 Feb 1911 – 12 kms, -47 C, Strong winds, very heavy going, All suffering very much with cold;
41. 5 Feb 1911 – 13 kms, -44 C, killed 9th dog, Fitzgerald ice break through frozen foot, stop to make fire;
- FINAL DIARY ENTRY – 135 kms remaining 5 dogs & they kept going, very weak & frozen;
42. Colin's Cabin – Search Party located cached Dispatch Bag & Mail Bag of Insp. Fitzgerald;
43. Crude Camp – Search Party located tent, stove, poles, and a plate;
44. Crude Camp – Search Party located toboggan, harnesses, campfire, 2 bodies (one committed suicide), and diary of Fitzgerald. Small pieces moose hide found in pot which had been boiled for food;
45. END – Riverbank in timber, Search Party found body of Carter who'd died 1st, dragged away from campfire, where Fitzgerald was found with last will in his pocket – only 40 kms from Fort McPherson



Campsite on the search expedition for the Lost Patrol of Inspector Fitzgerald. Photo is from the Yukon Archives YA 83-22 #75.



Charles Stewart who guided Cpl Dempster et al in searching for Inspector Fitzgerald and his men. Photo is from the Yukon Archives YA 86-42 #42.

These photos and others can be found at [Virtual Museum Canada](https://www.virtualmuseum.ca/).